



## Golf Central Control Systems



Preferred by Golf Course Professionals  
to Elevate Course Appearance and Playability

Irrigation is essential to improve or maintain course appearance and playability. At the heart of everything is central control.

This is the brain.

The caretaker.

The watchdog.



### Dynamic Adaptability:

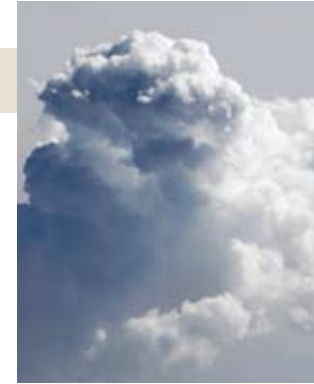
An exclusive and definitive reason why Rain Bird® central control is preferred by more golf course professionals worldwide.

With Rain Bird® central control, the lines of communication are always open. The exchange of information is free flowing throughout the entire irrigation system. With up-to-the-minute information readily accessible, central control is able to take immediate action when an irrigation challenge arises.

*Maybe it is a sudden thunderstorm: central control will temporarily suspend, adjust or stop watering schedules.*

*Maybe it's a change in the flow rate: central control will immediately make the needed adjustments to assure optimal water use.*

These examples illustrate the dynamically adaptable nature of Rain Bird central control. This instantaneous responsiveness is why more golf professionals rely on Rain Bird to responsibly manage water use, to lower utility and labor costs, and safeguard their course investment.



### Weather

Exclusive software includes **Smart Weather™** that monitors ET rates, and along with central control, modifies watering schedules based on actual turf requirements, and reactions based on user defined weather events.

**RainWatch™** monitors falling rain and instantaneously pauses and/or adjusts irrigation run times as necessary.

**Minimum ET™** integrates with a weather station to precisely determine central control watering cycles.



### Around the Course

An exclusive **CYCLE+SOAK™** feature allows central control to precisely schedule and apply water to be consistent with the infiltration rate of the soil in each specific area around the golf course. The benefit is responsible water use.

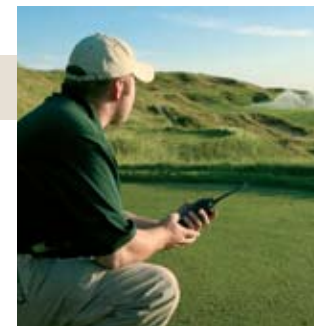


### Pump Station

**Pump Profiling** enables central control to limit power consumption during peak periods to maximize performance efficiency.

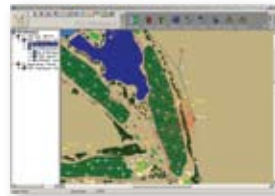
Exclusive **FloManager®** constantly communicates with central control to keep the irrigation system operating at peak efficiency, while managing flow in real time. Saving you money with the shortest, most efficient watering in the industry.

Rain Bird **Smart Pump™** provides real-time communication between the pump station and central control to adjust flow demand based on actual field conditions; this reduces pump downtime by automatically modifying system demand on the pump for optimum irrigation efficiency.



### Accessibility

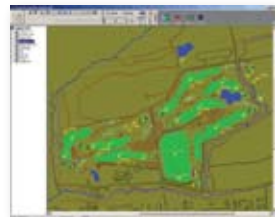
Rain Bird is continually developing systems to provide remote access to central control. One example is the **FREEDOM™ System**. FREEDOM allows the user to send commands to the central control via a handheld radio from anywhere on the course. Another example is the Rain Bird **MI Series Mobile Controller**. With just a web-enabled cell phone, central control can be accessed at any time, from virtually anywhere in the world.



Cirrus FloManager®

### Cirrus™

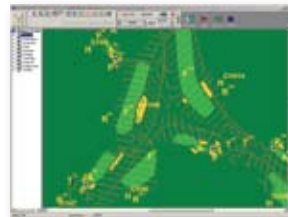
Cirrus™ central control incorporates Computer-Aided Design (CAD) drawings generated by GPS technology which allows you to see your course like no other system can. With state-of-the-art ET-based scheduling, customized course graphics and multiple mapping options, Cirrus makes controlling your irrigation system fast and easy.



Stratus II Course Monitor

### Stratus™ II

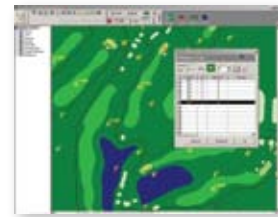
For easy-to-use, time- or ET-based scheduling there's really only one choice — Stratus™ II — the one irrigation central control system that combines the point-and-click simplicity of Windows® with intuitive Rain Bird features to control up to as many as 27 holes.



Nimbus II Course Monitor

### Nimbus™ II

For a superior combination of ET-based scheduling, advanced flow management and Windows-based simplicity, Nimbus™ II is an excellent choice to efficiently control all irrigation applications on up to three individual courses with a maximum of 54 holes.



Stratus LT Map

### Stratus™ LT

With Stratus™ LT you can almost immediately begin to manage all the irrigation applications on one 18-hole course — from the greens to the roughs — without having to become a computer expert or spend extensive time learning to operate the system. Stratus LT now supports ET-based scheduling with WS-PRO LT and a weather software module.

#### SHARED SYSTEM FEATURES

FEATURES	CIRRUS™	NIMBUS™ II	STRATUS™ II	STRATUS LT™	GO™/GO200™
Real-time decision making	✓	✓	✓	✓	✓
Radio communication option	✓	✓	✓	✓	✓
Works with all Rain Bird® satellites	✓	✓	✓	✓	*
Works with decoders	✓	✓	✓	✓	*
Works with Rain Bird® Integrated Control™ System (ICS)	✓	✓	✓	✓	✓
Works with FREEDOM™ System	✓	✓	✓	✓	✓
Works with Rain Bird® MI Series Mobile Controller	✓	✓	✓	✓	✓

PROGRAMMING	CIRRUS™	NIMBUS™ II	STRATUS™ II	STRATUS LT™	GO™/GO200™
Standard/QuickIRR™/SimpleIRR™	✓	✓	✓	✓	✓

SOFTWARE FEATURES	CIRRUS™	NIMBUS™ II	STRATUS™ II	STRATUS LT™	GO™/GO200™
FloManager® – Dynamic Power and Hydraulic Management	✓	✓	✓	✓	✓
Flo-Guard™	✓	✓	✓	✓	✓
ET-Based scheduling	✓	✓	✓	✓	–
ET Spreadsheet™ Analysis	✓	✓	✓	✓	–
Rain Bird® MI Series Mobile Controller	✓	✓	✓	✓	✓
Wireless Satellite Radio Diagnostics	✓	✓	✓	✓	–
Comprehensive Decoder Diagnostics	✓	✓	✓	✓	–
Advanced IC™ Diagnostics	✓	✓	✓	✓	✓
Real-Time Run Log	✓	✓	✓	✓	✓
Report Generation	✓	✓	✓	–	–
Water Budgeting 0% – 300%	✓	✓	✓	✓	✓
Rain Sensor	✓	✓	✓	✓	–
RainWatch™	✓	✓	✓	✓	–
QuickStart™	✓	✓	✓	✓	✓
Help Screens	✓	✓	✓	✓	✓
Course Monitor™	✓	✓	✓	✓	✓
Hole View	✓	✓	✓	✓	–
Projected Flow (Dryrun™)	✓	✓	✓	✓	✓
Graphics – Course View™	✓	✓	✓	✓	–
Import GPS, CAD or Aerial Photo	✓	✓	✓	✓	✓
Visual Monitoring – Area	✓	✓	✓	✓	–
Precipitation Data	✓	✓	✓	✓	–
Rotor Data	✓	✓	✓	✓	✓
Cycle + Soak™	✓	✓	✓	✓	✓

\*GO™ & GO200™ Centrals operate IC systems only

#### UNIQUE FEATURES AND OPTIONS

FEATURES	CIRRUS™	NIMBUS™ II	STRATUS™ II	STRATUS LT™	GO™/GO200™
Number of 2-wire satellite wire groups standard	4	4	1	1	*
Number of IC™ wire groups standard	4	4	1	1	1
Maximum number of interfaces - Hybrid (same or mix)	12	3	2	–	–
Maximum number of 2-wire satellite wire groups – Hybrid	48**	12**	4**	–	*
Maximum number of 2-wire/wireless satellite stations	32,256**	8,064**	2,688†	672	–
Maximum number of IC™ stations	36,000‡	9,000‡	3,000‡	750	750/200
Number of decoders/solenoids standard	500/1,000	500/1,000	500/1,000	200/400	–
Maximum number of decoder/solenoids – Hybrid	6,000/12,000Δ	1,500/3,000Δ	700/1,400Δ	300/600 with LDI◊	–
Number of active decoder solenoids	40/LDI	40/LDI	30 with LDI	15 with SDI	–
Maximum number of weather stations	5	5	1	1 (WS-PRO LT only)	–
Maximum number of pump stations	6	6	6	2	2

PROGRAMMING	CIRRUS™	NIMBUS™ II	STRATUS™ II	STRATUS LT™	GO™/GO200™
Number of courses	3	3	2	1	1
Number of holes	54	54	27	18	18
Number of Flo-Zones™	500	500	500	50	50
Programs	Unlimited	Unlimited	500	250	250
Schedules	50 per program	50 per program	25 per program	25 per program	25 per program
Irrigation programs – active simultaneous	50	50	20	10	10

SOFTWARE FEATURES	CIRRUS™	NIMBUS™ II	STRATUS™ II	STRATUS LT™	GO™/GO200™
ET Management (fully automatic)	✓	Optional	Optional	Optional	–
Rain Bucket™ – accumulated rainfall	✓	Optional	Optional	Optional	–
Visual Monitoring – Station level	✓	Optional	Optional	–	–
Smart Weather™ Alarms	✓	Optional	Optional	–	–

SOFTWARE MODULES	CIRRUS™	NIMBUS™ II	STRATUS™ II	STRATUS LT™	GO™/GO200™
Weather Software/Automatic ET	✓	Optional	Optional	Optional	–
Smart Weather™	✓	Optional	Optional	–	–
Additional Weather Stations	✓	Optional	Optional	–	–
Smart Sensors™ with Flo-Watch™	✓	Optional	Optional	Optional	–
Rain Bird® Messenger™	✓	Optional	Optional	Optional	–
Hybrid – Additional interfaces (same or mix)	✓	Optional	Optional	–	–
The FREEDOM System™	✓	Optional	Optional	Optional	Optional
Map Utilities™	✓	Optional	Optional	–	–
Station Layers – Map/Operations	✓	Optional	Optional	–	–
Smart Pump™	✓	Optional	Optional	Optional	–
Additional Wire Groups	✓	✓	Optional	–	–

\*GO™ and GO200™ Centrals operate IC™ systems only \*\* Possible with Hybrid Module and additional MIM™(s) ‡ Possible with Hybrid Module and additional IC(s) † Possible with Hybrid Module and additional Wire Groups Module(s) Δ Possible with Hybrid Module and additional LDI(s)  
 ✓ Included – Not available ◊ Possible using a LDI instead of standard SDI. Hybrid not required



**Irrigation has been the only Rain Bird® focus since 1933.**

*Rain Bird® was the first to install an irrigation system on a golf course, specifically the Los Angeles Country Club. Rain Bird was the first to develop centralized central control. Sure, there are other central control systems on the market, but none can compare to Rain Bird's proven track record of trusted performance on courses of every shape and size around the globe.*



You have a golf course that needs to be irrigated.

You need to select a central control system that is easy to use, and will continually safeguard how your investment looks and plays. This is essential, because course appearance and playability is how you entice and retain members, or encourage repeat rounds.

You also need a central control system that will responsibly manage water use, a system that will efficiently reduce utility and labor costs.

**So how do you begin the selection process?**



## Evaluate Your Course Irrigation Needs

All too often, greens committees or superintendents purchase a central control system that exceeds the irrigation needs of their golf course. So think about the level of irrigation control you believe is necessary to maintain course appearance and playability, while reducing water, labor and energy costs.

Keep in mind, too, that Rain Bird® systems are designed so as the irrigation needs of your course change over time, it will be affordably easy to upgrade your system with the most advanced technology.

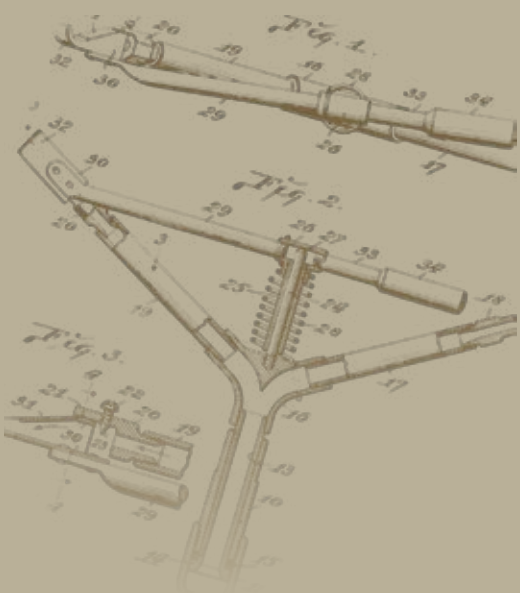


## Weigh What Others Have To Say

Talk with people who have had experience with more than one manufacturer's central control system. What you will likely hear is:

- How the system is dynamically adaptable, responding immediately with the right solution to any irrigation challenge.
- How Rain Bird central control systems are much easier to use.
- How everything integrates together to responsibly manage water use, and lower utility and labor costs.
- How Rain Bird offers so many more competitive advantages to improve or maintain course appearance and playability.

There is a definite difference. To find out why more golf course professionals prefer Rain Bird central control, ask around.



## The Intelligent Use of Water.™

LEADERSHIP • EDUCATION • PARTNERSHIPS • PRODUCTS

---

At Rain Bird, we believe it is our responsibility to develop products and technologies that use water efficiently. Our commitment also extends to education, training and services for our industry and our communities.

The need to conserve water has never been greater. We want to do even more, and with your help, we can. Visit [www.rainbird.com](http://www.rainbird.com) for more information about The Intelligent Use of Water.™



**Rain Bird Corporation**

970 W. Sierra Madre  
Azusa, CA 91702  
Phone: (626) 812-3400  
Fax: (626) 812-3411

**Rain Bird Technical Services**

(800) RAINBIRD (U.S. and Canada)

**Rain Bird Corporation**

6991 East Southpoint Road  
Tucson, AZ 85706  
Phone: (520) 741-6100  
Fax: (520) 741-6522

**Specification Hotline**

(800) 458-3005 (U.S. and Canada)

**Rain Bird International, Inc.**

P.O. Box 37  
Glendora, CA 91741  
Phone: (626) 963-9311  
Fax: (626) 963-4287